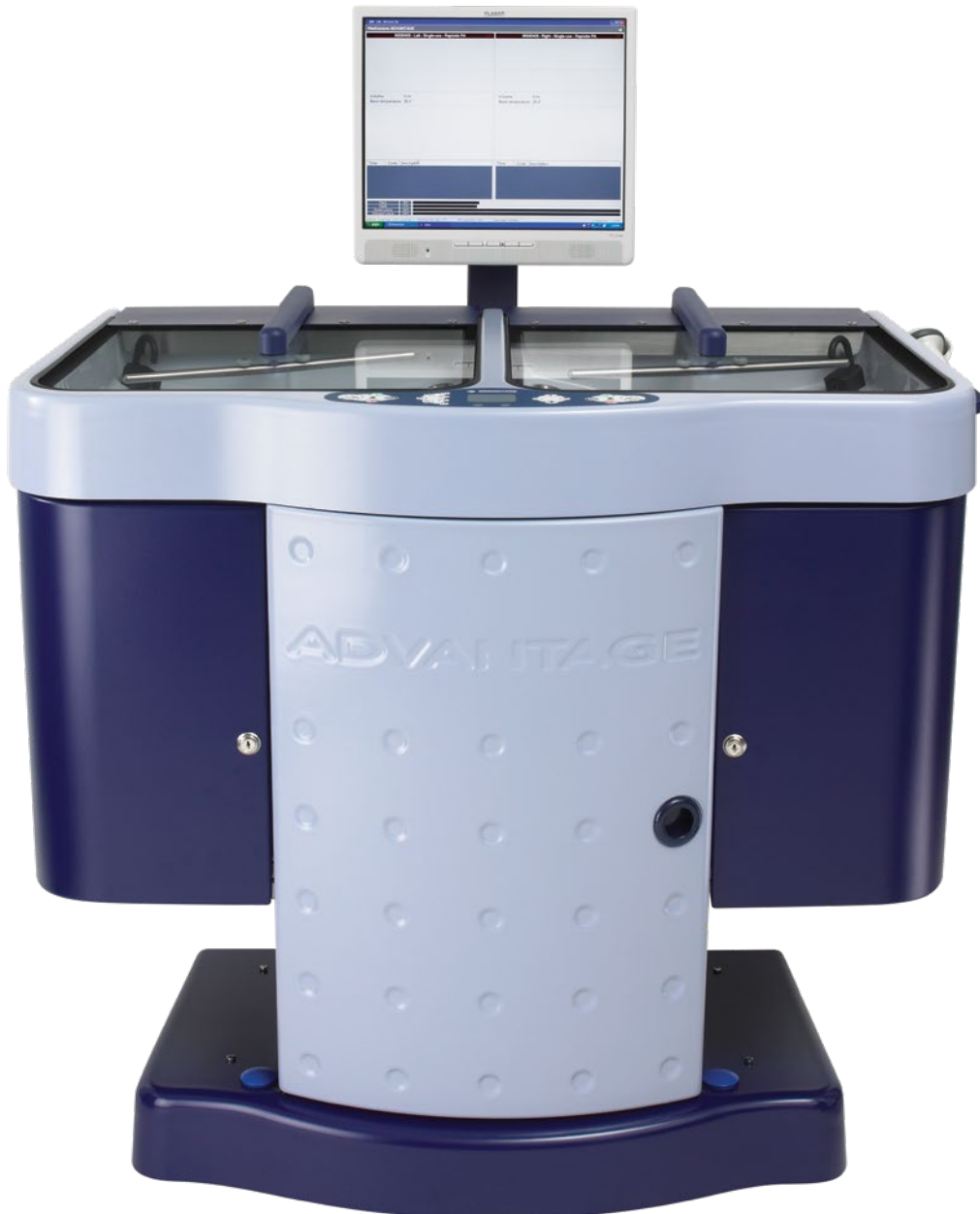


# ADVANTAGE PLUS™

Endoscope Reprocessing System

Reprocess



# THE MOST ADVANCED AUTOMATED ENDOSCOPE REPROCESSOR FROM THE MARKET LEADER

## REPROCESS A VARIETY OF ENDOSCOPES

- Compatible with all flexible endoscopes
- Validated for reprocessing TEE probes, dilators, cystoscopes and semi-critical rigid scopes

## COMPREHENSIVE ENDOSCOPE CHANNEL MONITORING

- Guarantees proper hookup connection
- Monitors endoscope channels for blockage
- Ensures all channels are fully reprocessed

## HIGH PERFORMANCE CLEANING CYCLE

- Automated cycle eliminates variability of manual cleaning
- Optimizes endoscope HLD process
- Documented wash cycle

## AUTOMATED LEAK TESTING AND ALCOHOL FLUSH

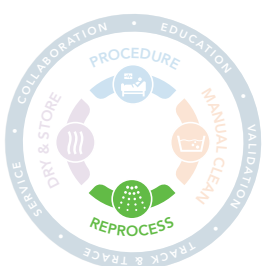
- Enables disinfection of an endoscope prior to repair
- Minimizes leak-related repair costs
- Facilitates drying of endoscope channels

## NETWORKING AND REMOTE DIAGNOSTICS

- Network multiple systems together for easy administration and reporting
- Connect to local or off-site server for centralized data collection and convenient back-ups
- Fast technical support via on-line, remote diagnostics
- Integrates with CANEXIS™ Integrated Workflow Solution

## RAPICIDE™ PA HIGH-LEVEL DISINFECTANT

- Proven endoscope compatibility
- Faster endoscope availability
- Reduced worker exposure; environmentally friendly
- Low-temp disinfection and Aldehyde-free



## THE COMPLETE CIRCLE OF PROTECTION

As the global vanguard in infection prevention, **only Cantel delivers the Complete Circle of Protection**, a full-value, proactive partnership dedicated to helping you remove risk, streamline operational efficiencies and optimize your success.

**REPROCESS** High-level disinfection is the cornerstone of infection prevention. Reprocessing technologies from Cantel are designed to ensure patient safety by adhering to the strictest of standards for high-level disinfection, optimise workflow efficiency, and deliver versatility by supporting a wide range of scopes.

# ADVANTAGE PLUS™

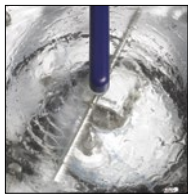
Endoscope Reprocessing System | Reprocess

Extensive cycle data management integrates with CANEXIS™ Integrated Workflow Solution

Visual display of real-time reprocessing information

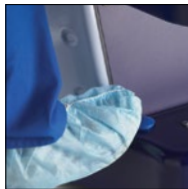
Barcode reader for fast and accurate data entry. PC based for scope specific cycle programming

Large, easy loading, independent basins have asynchronous operation and accommodate all flexible endoscopes



High performing cleaning cycle

Remote Diagnostics for efficient servicing



Hands-free lid operation provides ease of use and decreases endoscope cross-contamination risk



Individual channel monitoring for endoscope blockage and hook-up connection



Convenient transport cassette for endoscope protection and recontamination prevention



## ADVANTAGE PLUS™ ENDOSCOPE REPROCESSING SYSTEM ORDERING INFORMATION - NORTH AMERICA

MODEL NUMBER	DESCRIPTION
ADV-1007	ADVANTAGE PLUS Endoscope Reprocessing System for RAPICIDE™ PA Disinfectant with air compressor
ADV-1008	ADVANTAGE PLUS Endoscope Reprocessing System for RAPICIDE PA Disinfectant without air compressor
CAS-1000	Endoscope Transport Cassette

## ADVANTAGE PLUS ENDOSCOPE REPROCESSING SYSTEM ORDERING INFORMATION - INTERNATIONAL

MODEL NUMBER	DESCRIPTION
ADV-2001	ADVANTAGE PLUS Endoscope Reprocessing System for RAPICIDE PA Disinfectant with air compressor
ADV-2002	ADVANTAGE PLUS Endoscope Reprocessing System for RAPICIDE PA Disinfectant without air compressor

### Dimensions

59 H x 45 W x 36 D inches (157 H x 114 W x 92 D cm)

Lid Height: Open - 54" (137 cm), Closed - 38" (97 cm)

Depth with air compressor: 37.5" (95 cm)

### Weight

400 lbs (182 kg)

### Electrical Requirements

100-240 VAC ± 10%: single phase, 50/60HZ; 1000 Watts

### Electrical Safety Certifications

ETL Intertek Listed #75811

UL Standard 61010-1

EN Standard 61010-1

CSA/CAN Standard C22.2, No. 61010-1

### Water Supply

Minimum flow rate: 1.32 GPM (5 LPM) at 35 to 87 PSI (2.4 to 6 bar)

Water Temperature:

(35°C ± 2°C) - North America; (25°C ± 2°C) - International

Water Hardness: less than 12 gpg (200 ppm)

Pre-filter wall space: 26 H x 38 W x 6 D inch (66 H x 96 W x 15 D cm)

### Basin Size

19 W x 17 L x 7 D inch (48 H x 43 L x 18 D cm)



ADVANTAGE PLUS™ and RAPICIDE™ are trademarks of Medivators Inc.  
CANEXIS™ is a trademark of Cantel Medical Corp.

## MEDIVATORS IS NOW CANTEL

[www.cantelmedical.eu](http://www.cantelmedical.eu)

Medivators BV | p: +31 45 5 471 471 (customer service)

© 2019 Cantel Medical Corp. LIT-00075/A

